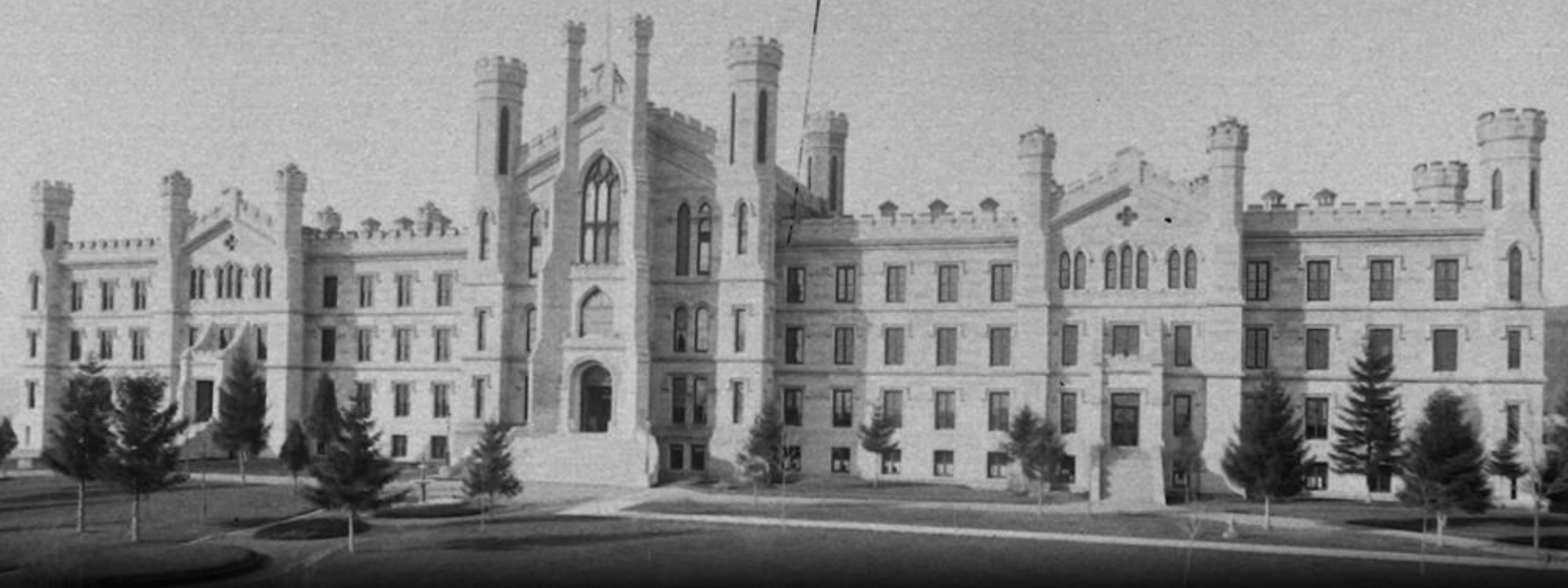


WINDOWS INTO THE PAST

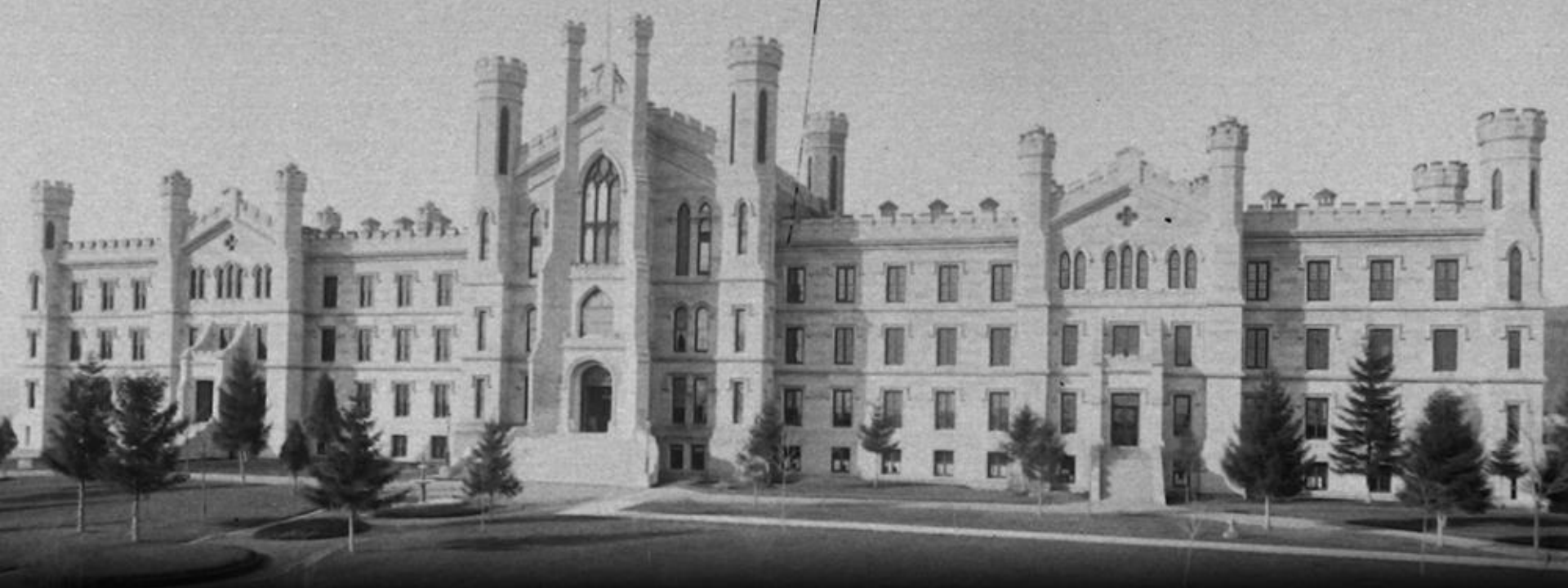


GLASS PLATE PHOTOS FROM THE
HISTORIC BINGHAMTON ASYLUM

Press Arrow Key or Left Click to Advance Slides



In 1990, the Main Building of the former Binghamton State Hospital was no longer used to house patients. At that time a large room on the third floor had been converted into a museum to display artifacts from the State Hospital.



Following collapse of a portion of the stone façade in 1993, the building was closed and has remained empty since that time.



September 2012: In preparation for rehabilitation of the building, all material was removed from the building for safe storage. During that effort a collection of 5,300 photographic glass plate negatives was discovered.






MUSEUM
3 RD FLOOR
OPEN TUESDAYS
1 - 3 PM





The image shows the interior of a museum with a high, vaulted ceiling featuring intricate wooden truss work and decorative corbels. The walls are a light, warm color. Several tall, narrow Gothic-style windows with multiple panes are visible, allowing natural light into the space. In the foreground, there are display cases with patterned wallpaper and various framed pictures. Wooden chairs and benches are arranged throughout the room. A yellow arrow points to a small, arched doorway on the right wall, which is partially obscured by a display case.

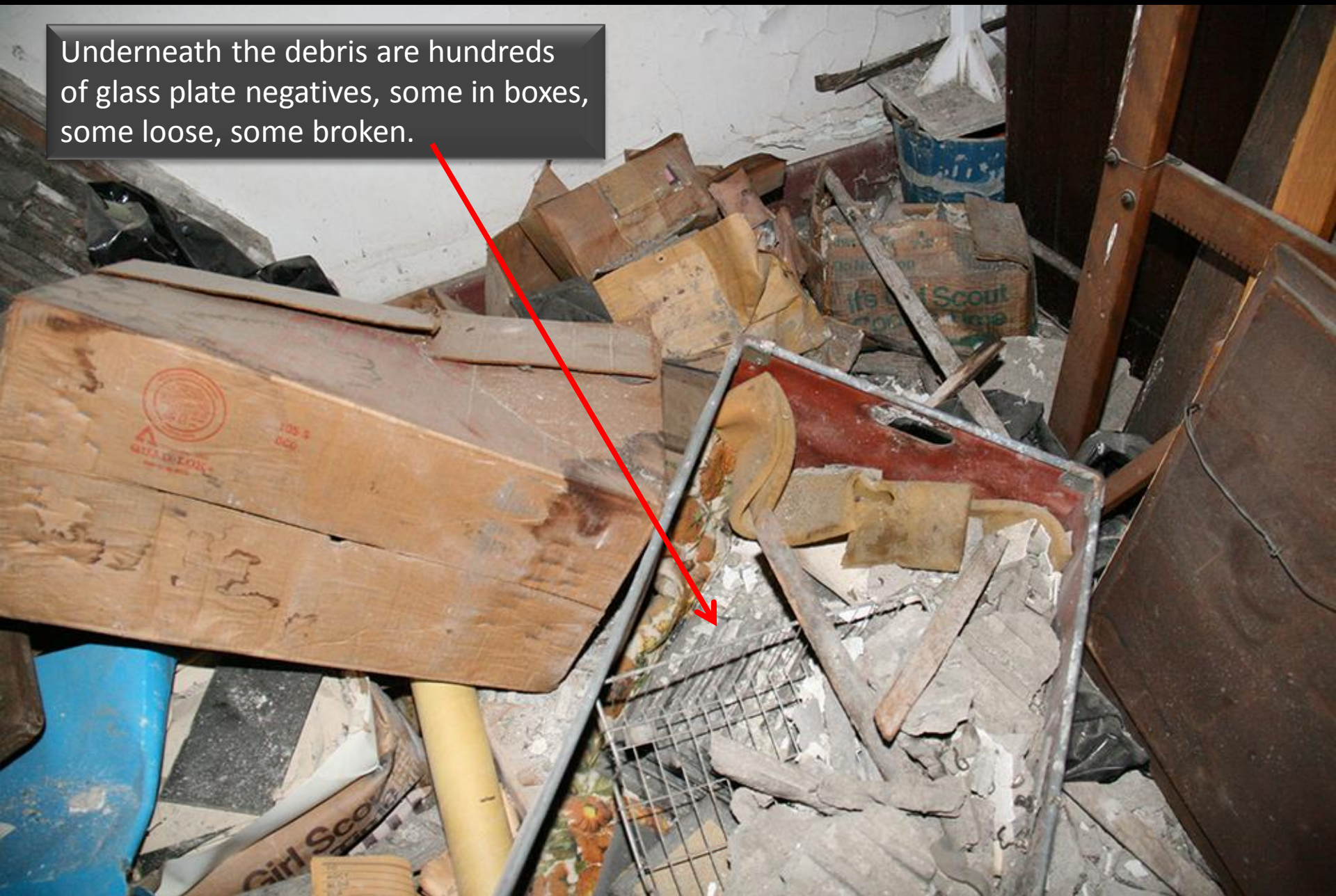
A door at the southeast corner of the museum opens to a small room

The room is filled with a variety of artifacts and other items. Sections of the ceiling have fallen, covering everything with a thick layer of plaster dust.





Underneath the debris are hundreds of glass plate negatives, some in boxes, some loose, some broken.



A large cabinet contains
several hundred additional
glass plate negatives.





PHOTOGRAPHIC DRY PLATES.



KEEP
IN DRY
PLACE

OPEN
IN DARK
ROOM
ONLY

MANUFACTURED BY THE

HAMMER DRY PLATE COMPANY.

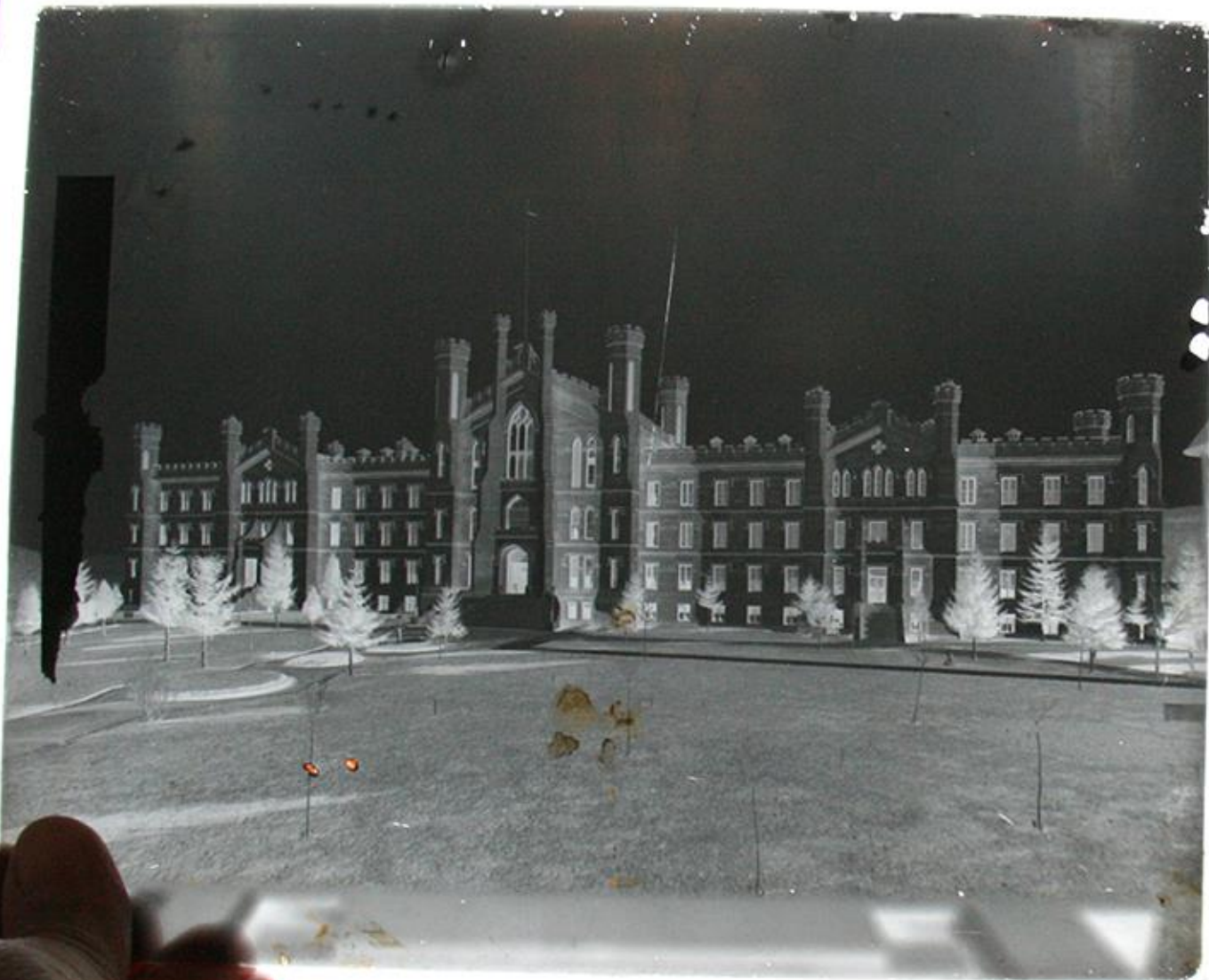
ST. LOUIS, MO.

There are over 5,300 glass plate negatives in the collection. Most date from the early 1900's. Subject matter includes buildings and scenes of the State Hospital campus, important events, hospital staff and patients.

All glass plate negatives have since been relocated to a climate-controlled environment, cleaned, digitally scanned and packaged in archival sleeves and boxes.

The following images are photographs taken of several back-lit, hand-held glass plate negatives. In some cases, the glass plate portion of the photograph has been inverted to show a positive image.

Images of individual patients are not included in this presentation.



The Main Building



The Main Building – negative inverted to show positive image



East Hall, built 1885, demolished 1984



Broadmoor Hall, built 1907



Fountain and Landscaping as viewed from front entrance of the Main Building



Original Asylum Power Plant on Susquehanna River, since demolished



Farm Scene



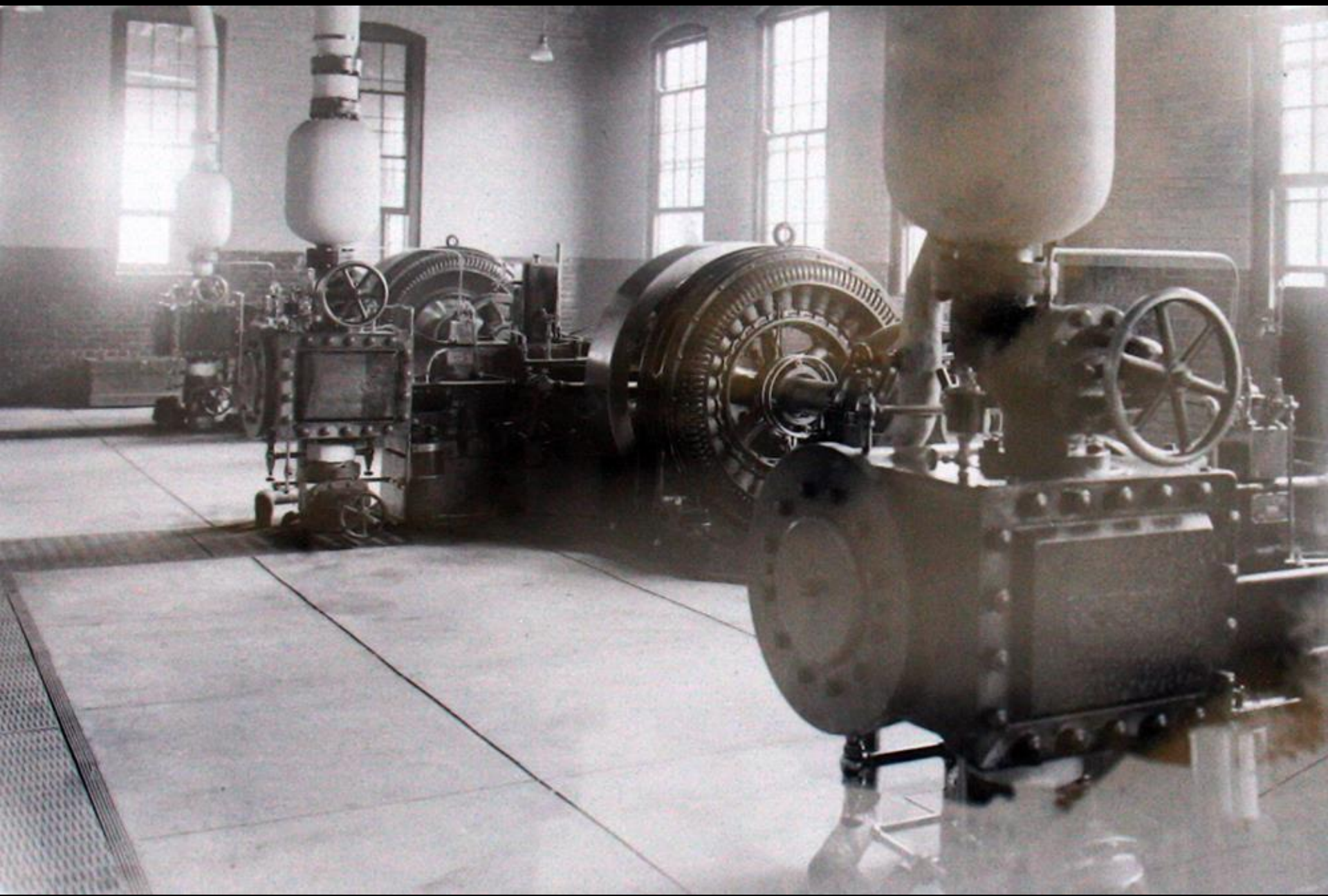
Greenhouse



The Morgue, third from right. Other buildings since demolished



Fire Department



Power Plant Turbines



State Hospital Trolley

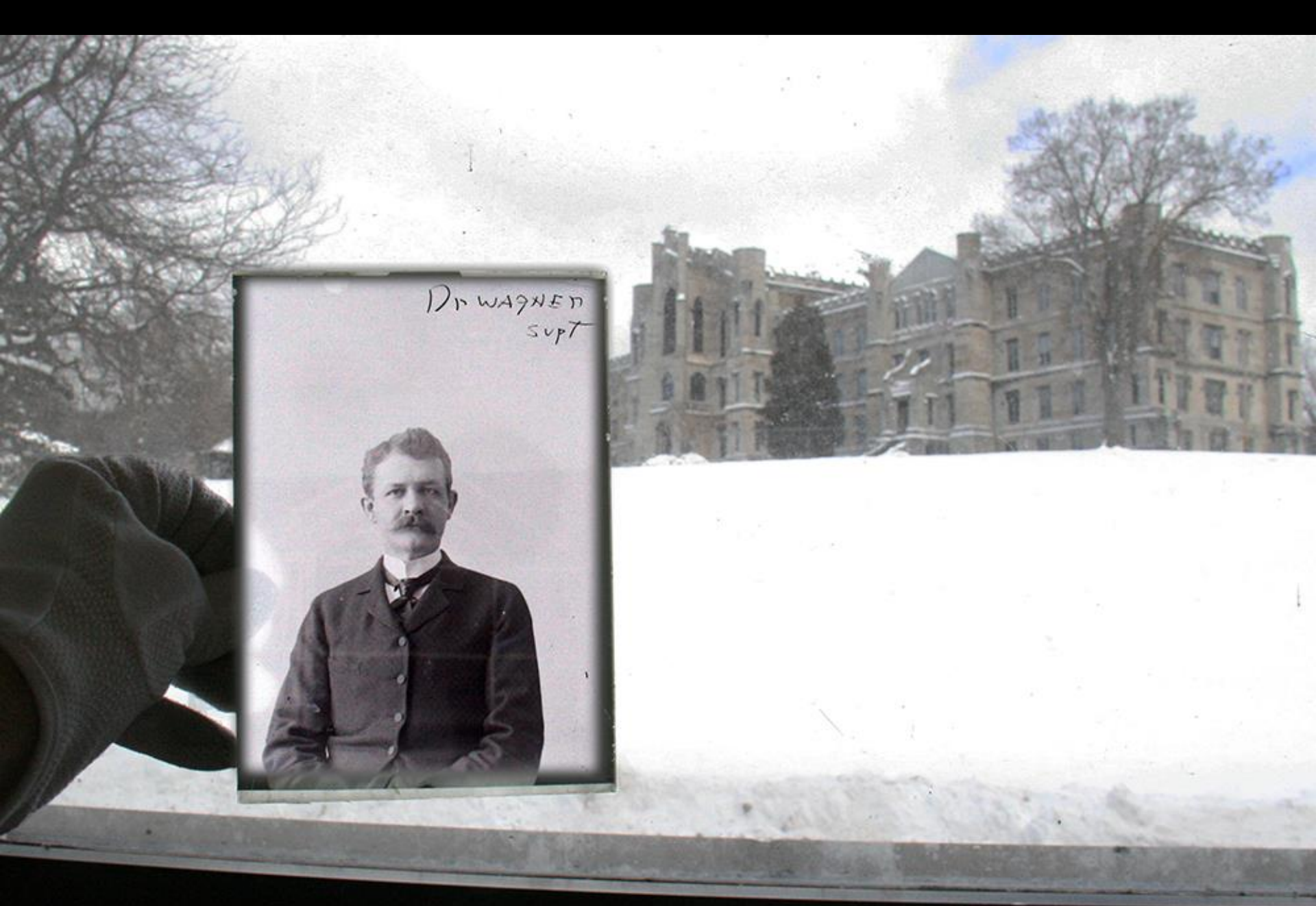


Photographer's studio



Photographer's studio

Staff



Dr. Charles G. Wagner, Director 1892-1924



Staff, front steps of Main Building



Nursing Staff, front steps of Main Building





Workers in Power Plant



Hydrotherapy Aides

P a t i e n t s

P a t i e n t s

It is very desirable to preserve with the records of cases treated in the hospital photographs of the individual patients. With such photographs the value of the case histories would be greatly enhanced, and in many instances the pictures would convey a better idea of the patient's actual condition than it would be possible to gain from a written description. The modern dry plate methods of photography are so simple that they are easily managed and involve but little expense. The sum we should require to purchase the apparatus necessary would be \$300.

*Excerpt from Fourteenth Annual Report of the Trustees of the Binghamton State Hospital
For the Year Ending September 30, 1892*

P a t i e n t s

Images of patients are not included in this presentation.



The Photographer



STATE HOSPITAL VIEWS
BINGHAMTON, N.Y.
(CIRCA 1894 - 1908)

PROPERTY OF
MR. FRED W. ERNIE
AND
MRS. MILLIE LORD ERNIE

DONATED BY
MRS. FRANKLIN PARK

In 1986 a small album filled with prints originally made from these glass plate negatives, was donated to the State Hospital by the grand-daughter of the photographer. A photo of the photographer was included.

nysAsylum.com